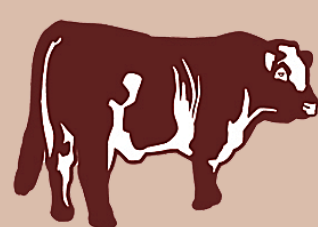


WHAT'S IN A BEERMULLAH BEEF BOX?

This sets out what is in an eighth, we welcome you to order a multiple of this if this is more convenient in one delivery. ie a quarter or a half

| No Packets | Cut Name | Total Weight (kg) |
|------------|----------------------|-------------------|
| 1 | T-bone Steaks | ~1.7kg |
| 1 | Scotch Fillet Steaks | ~0.9kg |
| 1 | Oyster Blade Steaks | ~0.5kg |
| 1 | Fillet Steak | ~0.3kg |
| 1 | Blade Steaks | ~0.55kg |
| 3 | Diced Steak | ~2.5kg |
| 1 | Porterhouse Steaks | ~0.95kg |
| 2 | Topside Steaks | ~1.3kg |
| 2 | Round Steaks | ~1.4kg |
| 2 | Rump Steaks | ~1.5kg |
| 1 | Bolar Blade Roast | ~1.2kg |
| 1 | Osso Bucco | ~1.0kg |
| 1 | Gravy Beef | ~1.2g |
| 7 | Mince | ~5.6kg |
| 2 | Corned Silverside | ~2.8kg |
| 4 | BBQ Sausages | ~3.0kg |



Beermullah